

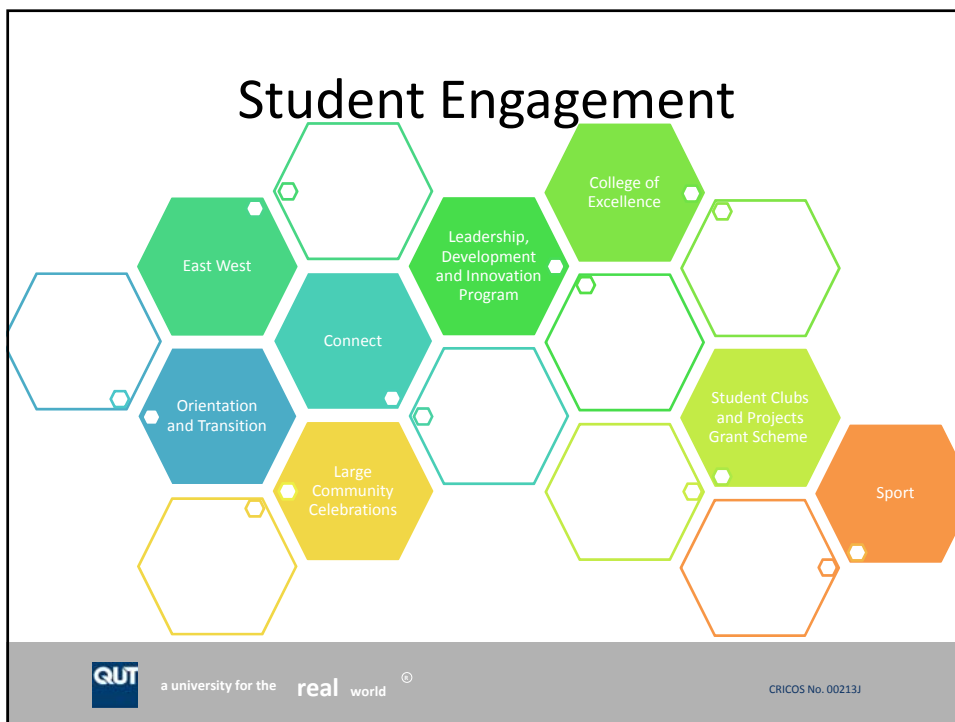
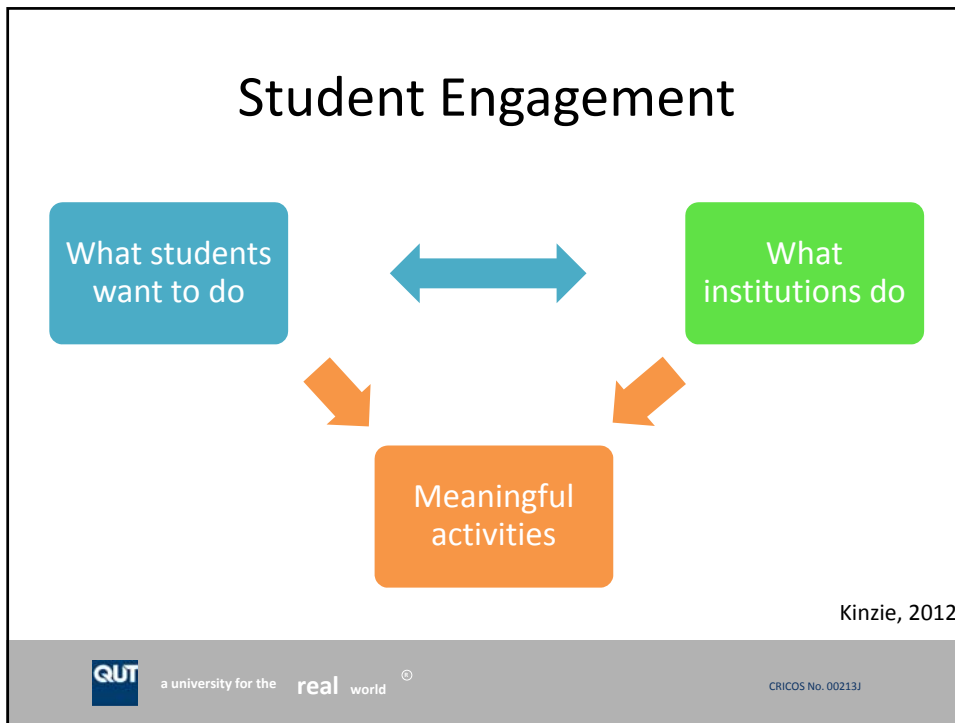
Co-curricular Student Engagement and Development

Clementine Davies & Leah Pabst
Campus Life Program, Student Engagement
Queensland University of Technology

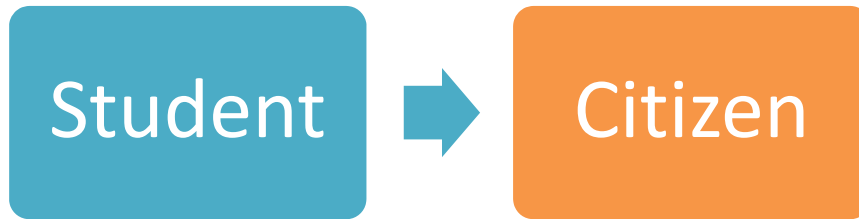
Co-curricular Student Engagement and Development

- Defining the terms
- QUT case studies
 - Social Orientation
 - QUT Connect
- Learnings and where to





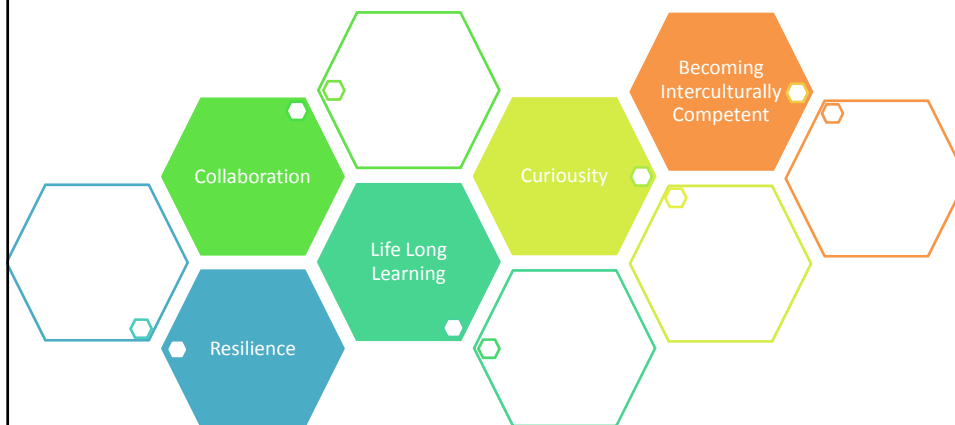
Student Development



a university for the real world[®]

CRICOS No. 00213J

Student Development



a university for the real world[®]

CRICOS No. 00213J



a university for the real world[®]

CRICOS No. 00213J

Social Orientation



Student Centred



Inclusive and community building



Intentional programming with multiple access points



a university for the real world[®]

CRICOS No. 00213J

Social Orientation

"I honestly didn't expect orientation week to be as big as it was. It has a great atmosphere with friendly people willing to help and made me really excited to be a part of a university like QUT with so many groups and opportunities. Definitely exceeded my expectations."
 - Commencing student, semester 1, 2014

The diagram illustrates a sequence of social orientation events. It starts with a large purple ring labeled 'Relaxed opening social event'. This is followed by a blue circle 'Official Welcome Party', an orange circle 'Connect sessions', and a green circle 'Structured space for informal social interaction'. The sequence continues with a teal circle 'Faculty based social events', a yellow circle 'Club activities', and a smaller green circle 'Student cohort based social events'. It concludes with a large purple ring labeled 'Closing social event - faculty based competition'.

QUT a university for the **real** world ©

CRICOS No. 00213J

Case Study: QUT Connect

QUT Connect is university run volunteering program which provides **current students** the opportunity to help **new students** settle into university life and actively contribute to building a vibrant campus **community**.

A cartoon illustration of a woman with blonde hair in a ponytail, wearing a green shirt. She is holding a white sign that says 'WELCOME!' and pointing towards a group of stylized white figures representing people. There are also some green cactus-like shapes at the bottom.

QUT a university for the **real** world ©

CRICOS No. 00213J

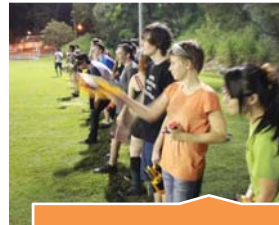
Case Study: QUT Connect



Orientation



Connect Session



Social Events



a university for the real world ©

CRICOS No. 00213J

Case Study: QUT Connect

Group Interviews



- Student led
- Learning Experience
- Value in fun

Integration into Leadership Program



- Practice referrals
- Skills extension
- Recognition
- Personalise involvement

Social Events



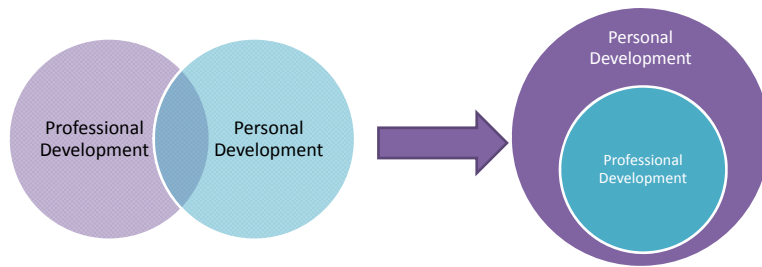
- Student led
- Filling gaps
- Reflection
- Application



a university for the real world ©

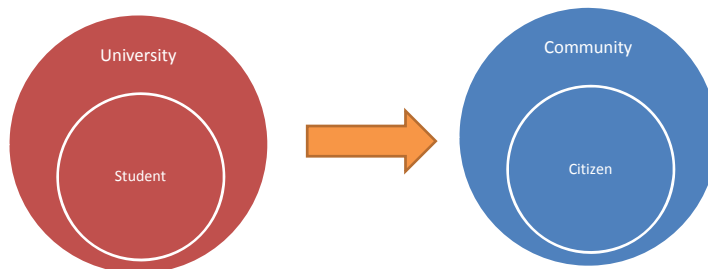
CRICOS No. 00213J

Learnings



Where To

Greater community engagement



Co-curricular Student Engagement and Development

- Defining the terms
- QUT case studies
 - Social Orientation
 - QUT Connect
- Where to and learnings



a university for the real world[®]

CRICOS No. 00213J

Questions?

Clementine Davies

clementine.davies@qut.edu.au

Leah Pabst

leah.pabst@qut.edu.au

www.student.qut.edu.au/studying/student-life



a university for the real world[®]

CRICOS No. 00213J