

# Experiences & expectations of community engagement for post-grad international students and their families in Palmerston North, New Zealand

Rashmi Kant  
Terry McGrath  
Massey University



## Methodology & demographics

### Methodology

- Survey online
- Interviews
- Observer comment

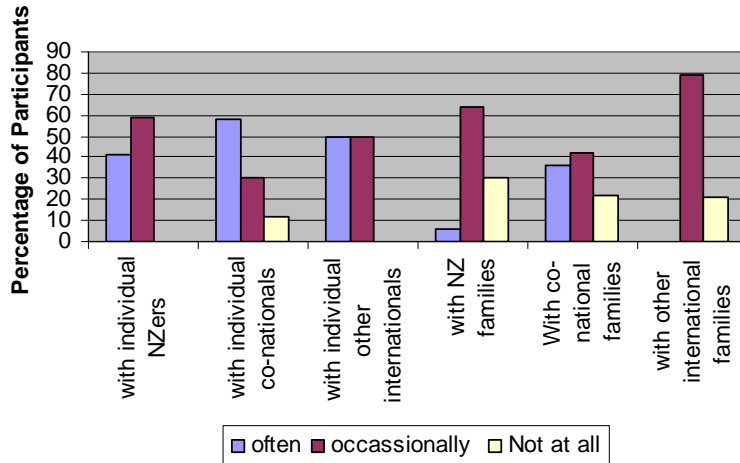
### • Demographics

- 23 nationalities (potentially up to 100)
- 55/45 Male/female
- 2.5 years into stay (4-5yrs) on average
- Predominance of Christian and Muslim
- 2/3 married with children



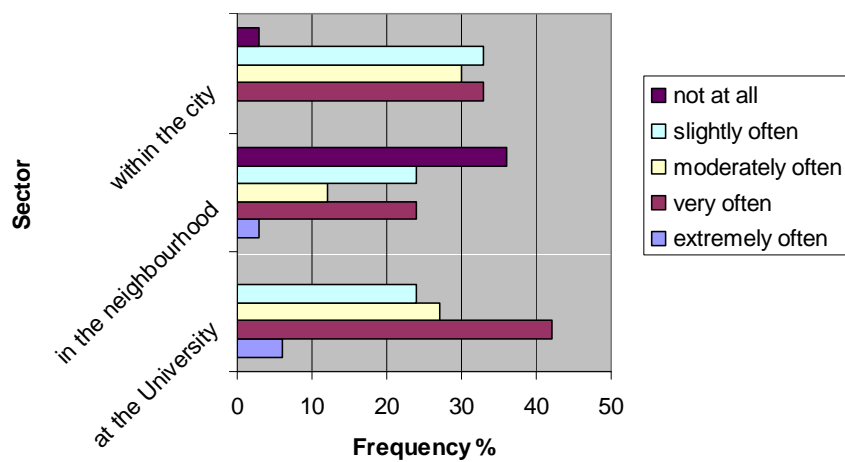
## Frequency of interaction

Community Engagement - Frequency of Interaction with Sectors of the Community



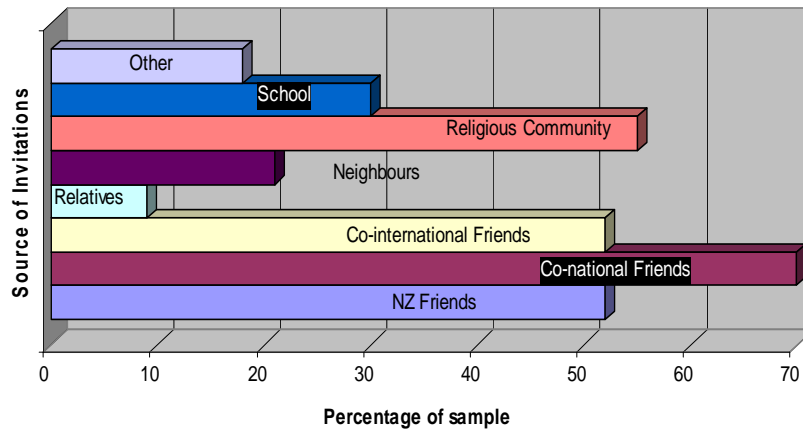
## Frequency of invitation

Community Engagement- Frequency of Invite by Sector



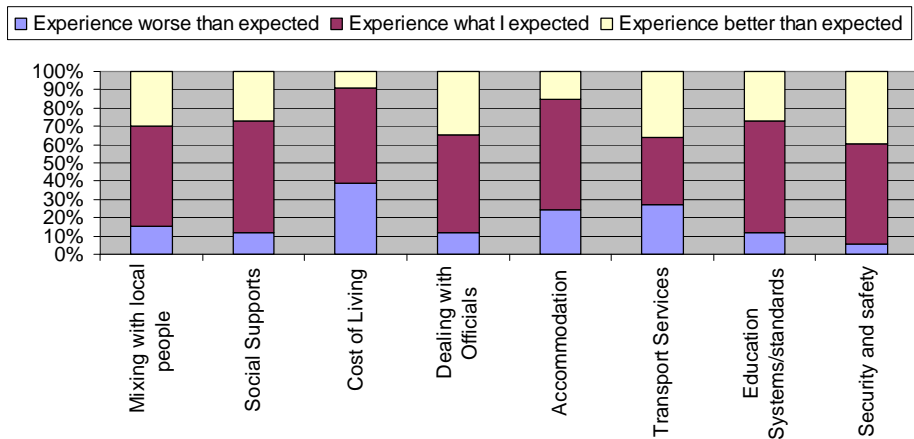
## Source of Invitations

Social Engagement- Source of Invitations



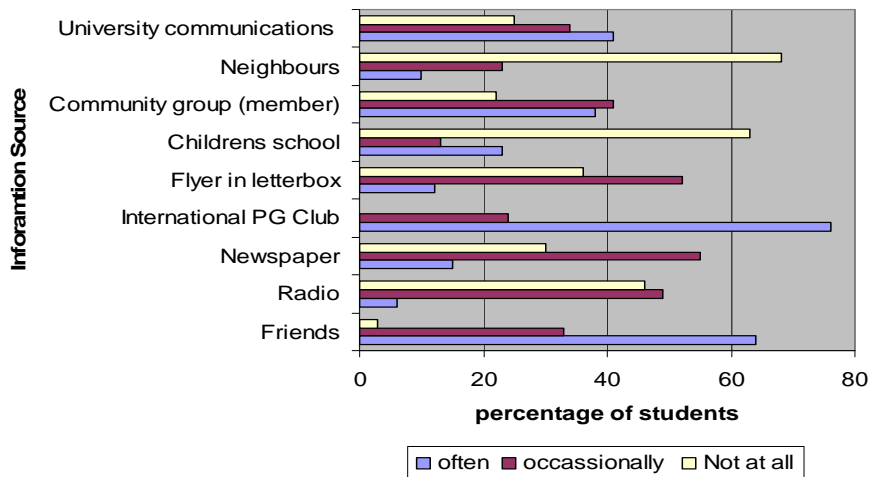
## Expectations and Experiences

Expectations & Experiences of Post Graduate International Students



## Where Information Obtained

### Where Information about Community Events is Obtained



## Areas for Attention

- Language assistance
  - English primarily for engagement
- Social/cultural assistance
  - Ability to relate across cultures
- Community housing initiatives
  - Ideally look to provide vehicle for neighbourhood engagement
- NZ Family connections needed
- Faith community involvement encouraged
- Better information on COL & accommodation
- Positive assistance in handling young New Zealanders
  - drinking culture in student housing areas

# Questions & interaction

## Q & A

Any questions and  
comments

